



SANY

POWER FOR YOU

Quality Changes the World

C9 SERIES

SY80C-9

- Operating Weight : 7920kg
- Bucket Capacity : 0.32m³ GP
- Engine Power : 56.3HP(42kW)/2100rpm



Advance Dynamic Control



- DOMCS intelligent control
- Sany Load-Sensing System
- Different working modes

High Profitability



- Low fuel consumption
- Higher working efficiency
- Lower maintenance cost

Remote Monitoring System



- Advance GPRS monitoring
- Remote error diagnosis
- Smart machine alerts

Stable & Reliable



- Proven hydraulic components
- Heavy duty structure
- Robust under carriage

SANY HEAVY INDUSTRY INDIA PVT. LTD.

SPECIFICATIONS

SY80C-9

ENGINE

Model	SANY D03S3
Type	4 Cylinder, Inline, Water Cooled
Rated Engine Power	56.3HP(42kW) /2100rpm
Max. Torque	190 N.m @ 1600-2000 rpm
Batteries	2 X 12 V
Displacement	2.77 L

CONTROL SYSTEM

Control Hydraulic System	SANY Load Sensing System
Working Modes	S L B
Remote Monitoring System	GPRS, GPS, GIS

HYDRAULIC SYSTEM

Main Pumps	Variable Displacement Axial Piston Pumps
Max. Flow	149 lpm
Travel Motor	2 Axial Piston Motor with Parking Brake
Swing Motor	1 Axial Piston Motor with Swing Holding Brake

RELIEF VALVE SETTINGS

Implement Circuit	28 Mpa
Swing Circuit	23.5 Mpa
Travel Circuit	26.3 Mpa
Pilot Circuit	3.5 Mpa

UNDERCARRIAGE & WORKING DEVICE

Track Shoes (Each Side)	39
Upper Rollers	1
Lower Rollers	5
Track Guard (Each Side)	2
Std. Track	450 mm
Std. Boom	3720 mm
Std. Arm	1620 mm
Std. Bucket	0.32 m ³ GP

PERFORMANCE

Max. Travel Speed(High/Low)	4.4/2.4 km/h
Swing Speed	11.5 rpm
Grade ability	70% / 35°
Ground Pressure	33 kPa
Max. Tracking Force	58 kN
Bucket Digging Force	56 kN
Arm Digging Force	38 kN

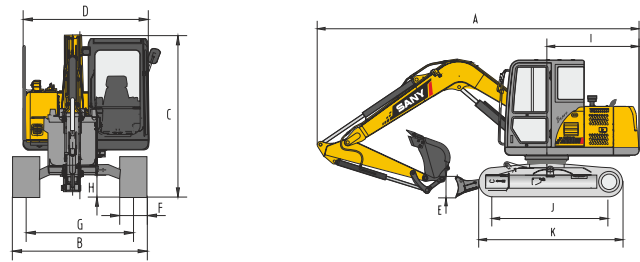
SERVICE REFILL CAPACITIES

Hydraulic Tank	120 L (Tank)	90 L (Refill)
Fuel Tank	150 L	
Engine Oil	9 L	
Radiator	12 L	
Swing Device	1.5 L	
Travel Device	2x2.5 L	

CAB

AC	Std.
----	------

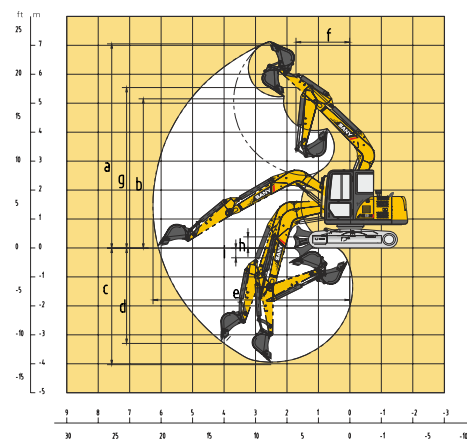
DIMENSION (Unit: mm)



DIMENSION (Unit: mm)

DIMENSION (Unit: mm)	Arm 1620
A. Overall Length	6095
B. Overall Width	2220
C. Overall Height	2610
D. Upper Width	2040
E. Blade Height	405
F. Std. Track Shoe Width	450
G. Track Gauge	1750
H. Min. Ground Clearance	380
I. Rear-end Swing Radius	1800
J. Distance between Tumbles	2195
K. Under Carriage Length	2820

WORKING RANGE



WORKING RANGE (Unit: mm)

WORKING RANGE (Unit: mm)	Arm 1620
a. Max. Cutting Height	7060
b. Max. Dumping Height	5155
c. Max. Digging Depth	4020
d. Vertical Digging Depth	3290
e. Max. Digging Reach	6240
f. Min. Swing Radius	1720
g. Max. Height at Min Swing Radius	5550
h. Max. Ground Clearance of Blade Up	350
i. Max. Depth of Blade Down	360

BUCKET

Capacity (m ³)	Width (mm)	Weight (kg)	Tooth Point	Arm Length
0.32 GP-Std.	800	240	4	1.62
0.28 GP-Opt.	720	224	5	✓

SANY HEAVY INDUSTRY INDIA PVT. LTD.

HEAD OFFICE

Address : Plot No. E-4, Chakan Industrial Area Phase-III,
 Village : Kuruli, Taluka: Khed, District: Pune - 410501, Maharashtra, INDIA.
 Tel : +91 21 35670288, Fax: +91 21 35670300
 E-mail : customercare@sany.in
 Website : www.sany.in

Toll Free No.: 1800-209-3337

Please Contact

Material & specification are subject to change without notice in accordance with our continuous technical innovations. Featured machines in photos may include additional.

Version: 2016/04